








ONC Ochoco Ranger Station 11-14 Jan, \$75, 6 Skiers Total

Scott Diamond scott.diamond.mail@gmail.com 503.643.6779



| THURSDAY 11 JAN | FRIDAY 12 JAN | SATURDAY 13 JAN | SUNDAY 14 JAN | MONDAY 15 JAN |
|--|---|---|---|--|
|   | Potluck Lookout Mountain  | Potluck Round Mountain  | Round 2 Mountain  |  Slide Mountain  |

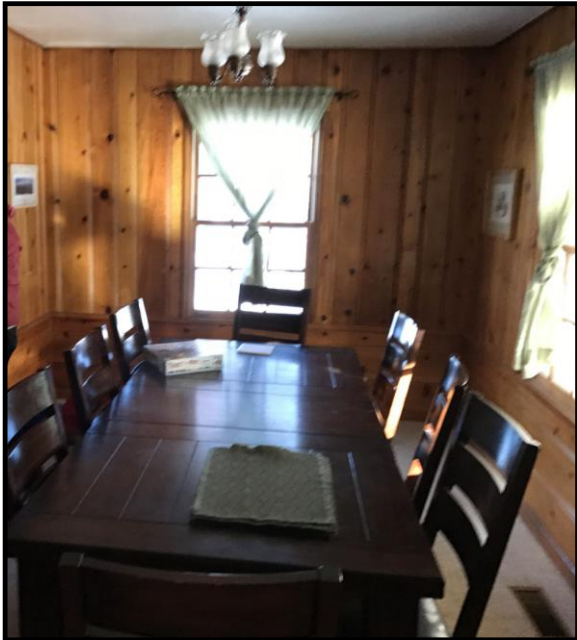
Five days of skiing possible!

I suspect most people will drive up Thursday and drive back Sunday evening or Monday

We will only plan on group dinners Fri & Sat Night

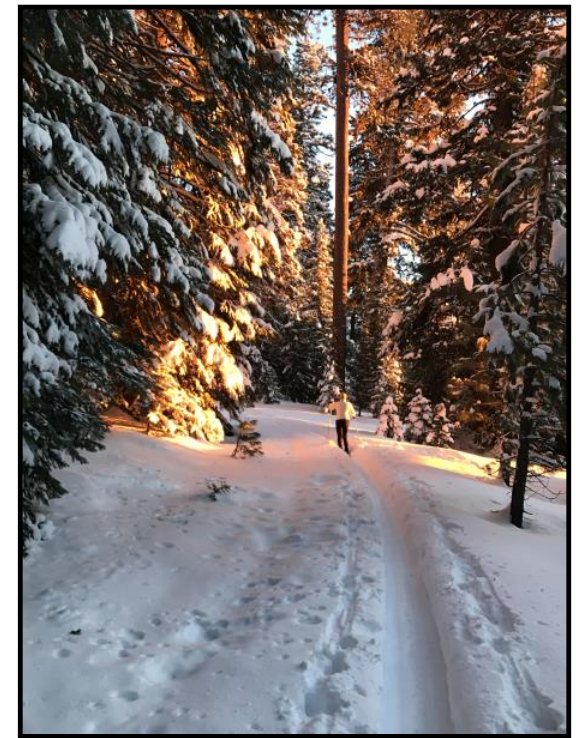
Ochoco Overview

- Stay at Ochoco Ranger Rental House!
 - This place is a real gem and I highly encourage everyone take a least one trip
- Take advantage of high elevation (> 5,000 feet)



Why Intermediate Skiing?

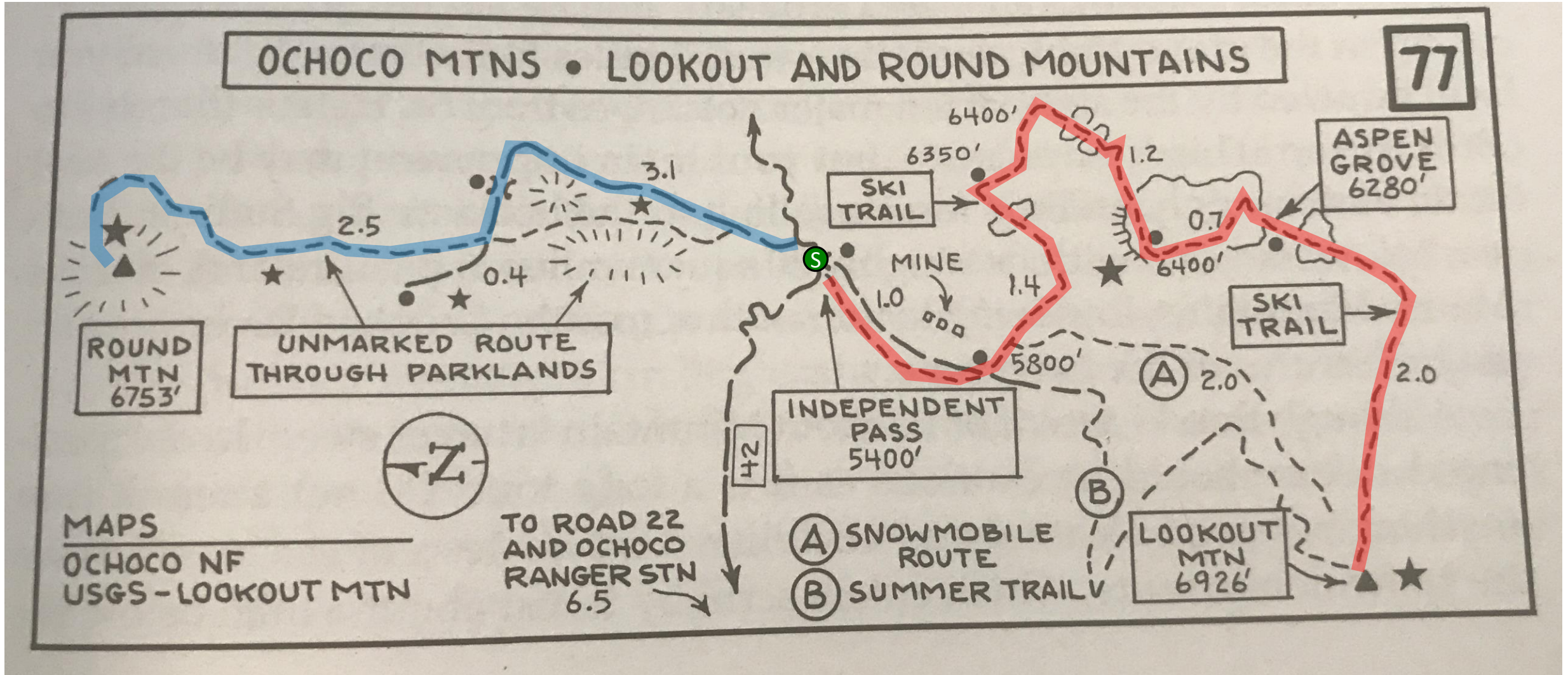
- At Ochoco you have the full range of ski options from beginning upwards. I listed this as an intermediate trip because I want to ski at that level (would prefer not to spend my days with beginner skiers)
- However it is fine with me if beginners go on this trip provided we have at least two and they are independent and safe.



Possible Tours

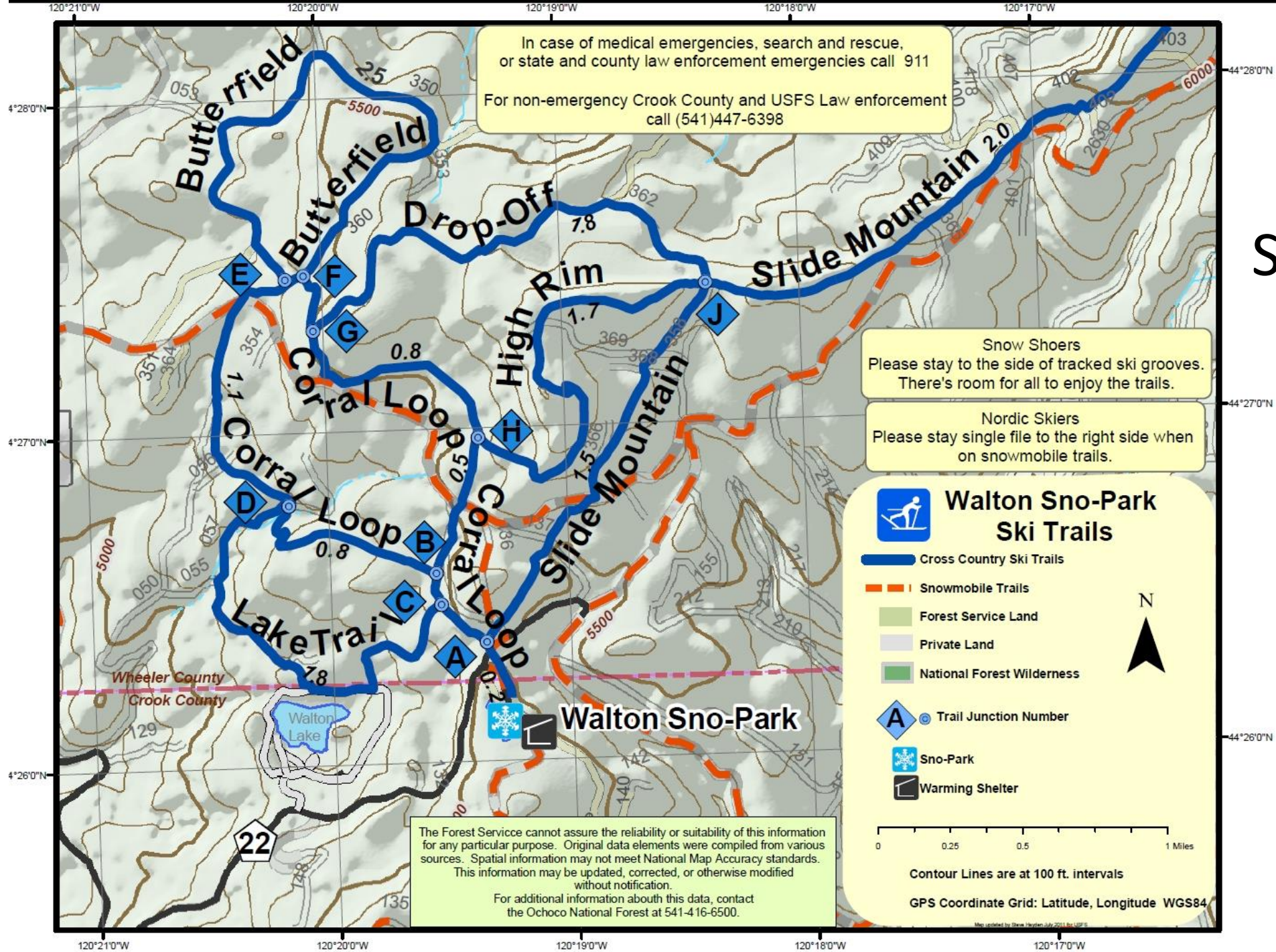
- I'd like to see about skiing Lookout, Round and Slide mountain
 - Typically ~12 miles and ~ 1,500 feet climbing
 - This plan depends on availability of parking (this may be an issue as there is not a sno-park for Lookout)
- You need to be an intermediate skier for these tours
 - Primarily because of the distance we cover.
- Metal edged backcountry skis and NNN-BC binding recommended
 - You don't need or want AT or Telemark





Round and Lookout mountain described in Klindt's book

Slide Mountain Tour



In case of medical emergencies, search and rescue, or state and county law enforcement emergencies call 911
 For non-emergency Crook County and USFS Law enforcement call (541)447-6398

Snow Shoers
 Please stay to the side of tracked ski grooves. There's room for all to enjoy the trails.

Nordic Skiers
 Please stay single file to the right side when on snowmobile trails.

Walton Sno-Park Ski Trails

- Cross Country Ski Trails
- Snowmobile Trails
- Forest Service Land
- Private Land
- National Forest Wilderness
- Trail Junction Number
- Sno-Park
- Warming Shelter

The Forest Service cannot assure the reliability or suitability of this information for any particular purpose. Original data elements were compiled from various sources. Spatial information may not meet National Map Accuracy standards. This information may be updated, corrected, or otherwise modified without notification.
 For additional information about this data, contact the Ochoco National Forest at 541-416-6500.

Contour Lines are at 100 ft. intervals
 GPS Coordinate Grid: Latitude, Longitude WGS84



Lookout Mountain – Breaking above trees



Lookout Mountain – Nice view above



Lookout Mountain – Reaching Summit



Round Mountain

**Round Mountain
Final push up**

