



Happy trails to all... may you ski this winter with friends

Pam Rigor led four volunteers up to Mt. St. Helens to trail tend the easy loops from Marble Mountain Sno-Park. We had Barbara Sack, chief nailer of blue diamonds, Patrick chief ladder placer (a critical skill), myself (loper

and nail and hammer carrier), and Howard tree cutter extraordinaire, and Pam loper and puller of all small trees in the trail. It was a comfortable day for

working. As we lunched by some late summer flowers, were visited by a hungry hummingbird feeding on the blooming foxglove.

Several types of mushrooms were spotted on the trail along with a bush of wild black raspberries

We were able to clear most of one loop and replace many fallen blue diamonds in preparation for the upcoming ski season. Happy trails to all!



Pam Rigor

Pam Rigor

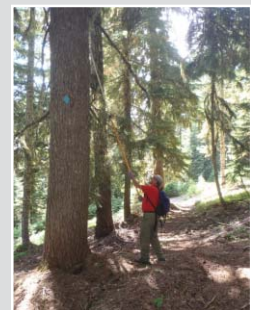


Patrick, Howard, Barbara and Tere after a day taking care of the trails out of Marble Mountain Sno-Park

Tere Enburg, *Trail Tender*

Inside

- 2** Upcoming Events
- 3** Nordic Issues
- 4** Day Tours
Trail Tending Party
- 5** Summer Trail Tending Schedule
- 5** Overnight Trip
Sign up on October 1
- 10** Overnight Trip



Mary Helpkosi

Volunteer now

Volunteers are needed for a few key

positions for this upcoming winter season. Day tours coordinator and two helper/recruiters—it just takes some time during the first two weeks of the month. Nordic Issues chair and one or two more helpers to keep track of things that affect Nordic skiers. Talk to Ann Truax at the upcoming general meeting on October 1 about these very important positions.

◆ Pam Rigor, *Editor*

Did you renew your membership

Your membership renewal form was

‘snail mailed’ to you in August; be sure to fill it out and mail it to us with your check. You can use paypal to pay your membership fee (just click on “Renewal” under “Membership Options”), if you join our meetup site (www.meetup.com/Oregon-Nordic-Ski-Club-Portland-Chapter/); include a copy of the paypal email with your membership form.

You can renew at the October 1 meeting too. ◆

Susan Kelly, *Membership Chair*

Come join us to work on the last work party so our trails will be ready for us this winter

See page 4 for details

BOARD MEMBERS

Ann Truax,
President
503 756-8891
Kimberly Davis
Vice-President
503-282-1506
cancionnueva@yahoo.com
Mary Hepokoski
Treasurer
503 245-1618
Steve Planchon
Secretary
503 286-2216
ssplanchon@yahoo.com
Andr  Fortin
503 780-5843
afortin85@gmail.com
Elke Schoen
503-239-9286
elkeschoen@msn.com
William Yaeger
503 516-7794
w.yaeger@comcast.net

COORDINATORS AND COMMITTEES:

Day Tours:

Coordinator—vacant
oncdartours@gmail.com
Recruiter(s)—vacant
Novice Ski Tours
Coordinator—vacant
Summer Coordinator
Bike/Hike—vacant

continued on sidebar page 3

EDITORIAL NOTES

The deadline for submissions is the 15th of the month (for the next month's publication).

Send submissions to oncnwsltr@gmail.com as a Microsoft Word document (no formatting ie. no bold text, all caps text, tabs or other settings) in Times Roman as a attachment (preferred); compatible text files as an attachment; and put text in an e-mail with no formatting. **Corrections:** e-mail corrections and/or additions to the editor.

This newsletter is published monthly by: Portland Chapter of the Oregon Nordic Club, Inc. P.O. Box 3906 Portland, OR 97208

U P C O M I N G E V E N T S

October 1 ▶ TUESDAY

Overnight Tours' Extravaganza Preview of ONC overnight ski trips
Multnomah Arts Center, 7688 SW Capitol Hwy., 7:30 p.m. Free!

October 6 ▶ SATURDAY

Community Cycling Center Bike Drive
REI Stores or CCC on NE Alberta St., 11 a.m.–3 p.m.
When you donate a bike, the Center's professional mechanics refurbish it and direct it to their bike safety education programs for underserved youth and adults
Info: www.communitycyclingcenter.org

Oct 9 ▶ WEDNESDAY

Fall Day Hiking Basics
REI Tualatin, 6:30–8:00 p.m.
Free! Info/sign-up: rei.com (store events)

Oct 10 ▶ THURSDAY

Thru Hike Tale: The Continental Divide Trail
REI Clackamas, 6:30–8:00 p.m.
Free! Info/sign-up: rei.com (store events)

Oct 12 ▶ SATURDAY

Forest Park Conservancy: Day of Stewardship
Forest Park, 9 a.m.–12:30 p.m.
Remove invasive plant species in the morning and then celebrating your accomplishments with pizza and prizes.
Register: <http://www.forestparkconservancy.org/BookingRetrieve.aspx?ID=210351>

Oct 16 ▶ WEDNESDAY

Fall Hiking: Columbia River Gorge
REI Portland, 6:30–8:00 p.m.
Free! Info/sign-up: rei.com (store events)

Oct 22 ▶ TUESDAY

On Mount Hood
REI Hillsboro, 6:30–7:30 p.m.
Free! Info/sign-up: rei.com (store events)

Clinics & Training

Oct and Nov ▶ SATURDAYS 2013 Fall XC Training Series

The dates are not yet set, watch the websites. This is the 11th year of conditioning sessions for XC skiers of all ages and abilities right in the heart of Portland. Just a small donation (for Teacup members) covers the expenses for 4-5 morning sessions (9:30-11a.m.). No special equipment needed. All sessions rain or shine.
Info: teacupnordic.org www.xcoregon.org
Sponsor by: Oregon Nordic Club Teacup Chapter and XC Oregon race team

December 5–15 ▶ WED–SUN

2013 Oregon Fall Camp, Mt. Bachelor
Start your ski season off with an XC skicamp. Features reliable early December skiing at Mt. Bachelor, top coaching, training lectures, and (optional) world-class physiology testing. For adult XC skiers and racers (low intermediate to expert).
Info: xcoregon.org

Oregon Nordic Club Portland Chapter

Formed as a nonprofit volunteer organization in 1968 by Nordic ski enthusiasts interested in using public lands for recreational cross-country skiing, the Portland Chapter of the Oregon Nordic Club grew to over 550 members. The Portland Chapter is one of twelve chapters in the state. With activities year-round, the Portland Chapter is dedicated to promoting greater participation in and understanding of the value of outdoor recreation with an emphasis on Nordic and back-country skiing. In addition we hike, climb, backpack and bicycle year round in the northwest forests, mountains and in-town.

Member Benefits

- ▶ Free day tours; overnight trips, exclusively for members
- ▶ Clinics and lessons
- ▶ Rental discounts at selected merchants
- ▶ Member rates on Mazama activities (excludes classes) and use of Mazama Lodge: day-use, overnight and meals
- ▶ Meet new friends who ski, hike and bike
- ▶ Monthly newsletter with free classified ads
- ▶ Support of construction and maintenance of winter trails in the Mt. Hood and Gifford Pinchot National Forests
- ▶ Membership in Northwest Ski Club Council, Far West Ski Association and Federation of Western Outdoor Clubs.
Discounts/benefits: www.nwskiers.org www.fwsa.org
www.federationofwesternoutdoorclub.org

Memberships are renewed September 1 each year, fees are \$27 for single and \$33 for family/household. Info: membership@onc.org

Improve your skiing and leadership skills

Join us for either of these sessions. On Saturday, October 19, 3–8 p.m. Shelly Hakanson of Wy'East Nordic, an expert tele and cross-country skier and instructor, will lead an in-town session. Learn how to enhance your skiing, maintain safety and deal with emergency situations while leading groups of skiers with different abilities. A nice dinner is provided. Spaces is limited so RSVP by October 10.

Get out on the snow on Saturday, **December 14** from 9 a.m.–3 p.m. with Shelly to advance your Nordic skiing technique. All abilities are welcome. She'll cover anything from how to help a beginner glide, stop and turn more effectively; group management (keeping everyone together and still have fun); tour planning; emergency shelter building and more. RSVP by December 1.

For both session RSVP to Ann Truax (ann.truax@gmail.com 503 756-8891) or Mary Hepokoski (hepomp8@comcast.net 503 245-1618)

Ann Truax, *President*

PRESIDENT'S SKI TRACKS

What's on your bucket list for cross-country

skiing locations? Big Sky Resort, Montana? Trapp Family Lodge in Stowe, Vermont? The backwoods of Michigan? Ketchum, Idaho? My dream trip is August in Tierra del Fuego, Argentina. Closer to home, Anthony Lakes in Eastern Oregon sounds distinctly possible. We (the ONC Board) would like to hear your suggestions for overnight trips, so we can expand our offerings. What locations tantalize you? What Nordic dreams do you want to actualize? In the meantime, our overnight tour coordinator extraordinaire, Ted Scheinman, with the help of Sam Digard, Mary Hepokoski and others, has been making calls, reserving condos, and brokering deals for this winter's calendar of trips. So far, the following trips have been scheduled: Methow Valley, WA (120 miles of freshly groomed trails); Black Butte, OR (a luxurious setting close to numerous skiing possibilities); Sun River, OR (comfortable condos available Thanksgiving, MLK Weekend and President's Weekend); Flying L Ranch in Glenwood WA (a real ranch experience close to Mt. Adams); Scottish Lakes (rustic cabins in the skier's paradise of the North Central Cascades); Ochocos (a house in the Ochoco Mountains east of Prineville, OR, surrounded by superb snow and, believe it or not, wild horses); Tilly Jane cabin on Mt. Hood (a real wilderness experience for the hearty); Breitenbush, OR (combining cabins in the woods, hot springs and ski trails); Crater Lake (breathtaking views and plenty of snow); the Willows (powder skiing galore); the Canadian Rockies (unbelievable scenery and skiing); and Yellowstone (magic beyond your imagination). Dates, prices and a more detailed description of each trip will be published in the October newsletter and up on the onc.org website soon. If you're new to cross-country skiing, the Crater Lake trip is an excellent choice.

The October first ONC program at Multnomah Art Center is our Overnight Trip Extravaganza. Members (make sure to renew your membership this month) will have first crack at signing up for their trips of choice. If you're not a member, you can certainly become one on-the-spot (\$27 for single, \$33 for a family). Before the snow begins to fall, we still have other opportunities for getting together with other outdoor enthusiasts. Check the website for hikes, trail maintenance and woodstocking at the Tilly Jane cabin on Mt. Hood. Or sign up at meetup.com with Portland Nordic Club for event announcements. Looking forward to seeing you October 1!

Ann Truax, *President*

NORDIC ISSUES

Oregonians will have to buy a Washington Sno-Park Permit and Washingtonians will have to buy an Oregon Sno-park Permit!

Washington Ends Sno-Park Permit Reciprocity

For the last 35 years, Oregon and Washington winter recreationists could buy one sno-park permit which was honored in the neighboring state. No longer. Washington announced it is ending this reciprocal agreement for Oregon, other states and Canada. Apparently, the Washington program is bigger and spends more dollars. According to local newspapers, Pamela McConkey, Washington's winter recreation manager, stated "Why are we doing reciprocity when our programs are not reciprocal"?

Because of this recent decision, in the spirit of reciprocity, Oregon will no longer honor a Washington sno-park permit. A Washington permit will cost you \$40, while the Oregon permit is \$25 (up \$5 this year).

If a new I-5 interstate bridge (Columbia River Crossing) is built solely with Oregon funds, should Oregon dump Washingtonians off mid-river and let them swim home?

Gifford Pinchot National Forest

Mushroom Picking Time The Gifford Pinchot National Forest offers free, personal use permits for mushroom picking. You can pick up to 3 gallons per day, and the permit allows up to 10 days of picking in a calendar year. If you consume all of the mushrooms within the Forest, no permit is required! Now that is a challenge. If you plan to sell the mushrooms, you'll need a commercial fee permit.

Improved Cell Coverage Planned at White

Pass Recreation Area The Forest Service approved plans by American Tower Company to erect a 100 ft. tower with equipment building at White Pass Recreation Area, just off Highway 12. According to the Decision Memo, the project will improve cellular communications for winter recreationists in the area. Construction should start soon.

Forest Service Regional Office moves

Have you noticed the striking, glass dominated building with a south tilting solar paneled roof and jailhouse style aluminum rods, located just west of the Hawthorne Bridge in downtown Portland? Residing at SW 3rd and Salmon, it is the renovated Edith Green-Wendell Wyatt federal building. The Bureau of Land Management State office moved in last month, and in early September the Forest Service Regional office also completed its move. It is designed to achieve LEED certification, will eventually house 12 federal agencies and was funded by the American Reinvestment and Recovery Act.

Submitted by Diana Hsieh, *Nordic Issues*

Membership:

Susan Kelly, chair
503 706-6463
membership@onc.org
Membership Database
Mark Fitzsimons
503 756-7534
oncmemberDB@gmail.com
mfitzsim@aol.com

Nordic Issues:

—vacant

Overnight Tours:

Ted Scheinman, chair
503 452-7432
tedskier@gmail.com

Programs:

Ron Bekey, chair
503 475-0084
rbekey@gmail.com

Publications:

Pam Rigor, newsletter editor
503 297-4284

oncnewsletter@gmail.com

Newsletter Distribution

Bill Yaeger
503 516-7794
w.yaeger@comcast.net

Donna Parsons

503 292-9801
drparsons39@gmail.com

Publicity:

Ann Truax,
503 231-7220
ann.truax@gmail.com

Shelters:

Tilly Jane A-Frame
André Fortin
503 780-5843
afortin85@gmail.com

Trillium Yurt

John Nakada
503 775-4774
johnhnakada@hotmail.com
Pam Rigor
503 297-4284

Trail Maintenance:

Greg Wenneson
503 460-7231
gregwenn@sonic.net

Recruiter

vacant

Website:

Tony Ackerman,
Webmaster
503 647-0068
tonyackerman1@comcast.net

DAY TOUR POLICIES

Tours depart promptly, arrive at least 10 minutes before the scheduled departure time to allow for necessary arrangements. Arrive fully prepared for the day's activities!

Trips are not canceled unless the weather and road conditions are unsafe; contact the leader when conditions are dangerous. Tour leaders may change tour itinerary, due to weather conditions.

Bring the Tour Essentials (see list on the sidebar, page 6), food, water, map, clothing, and equipment appropriate for the tour.

Tour leaders can forbid you from joining a tour, if you are not prepared.

Read and heed the Oregon Nordic Club's Tour Ratings listed below.

Day tour participants are encouraged to car pool and share costs. The suggested contribution by each passenger is 15 cents per mile. For three or more passengers, the maximum total contribution by all passengers is limited to 45 cents per mile.

Dogs are only allowed on "Dog Tours." These trips are designated with:  See website for dog policy for ski tours.

Dogs must be on a leash in sno-parks. Please keep dogs off ski tracks and pack out dog waste.

TOUR RATINGS

These designations are a guide to the skill and commitment level required for each tour. A full trip rating always includes a terrain rating plus a

continued on sidebar page 5

DAY TOURS

Note: if weather or road conditions are dangerous, please confirm tour with the leader.

Check the ONC's website or our meetup site (www.meetup.com/Oregon-Nordic-Ski-Club-Portland-Chapter) for last minute day tours.

October 2 or 9, Wed, Trail Tending Party

Location TBD, Mt. Hood, OR or WA

This trail tender is dependent on the weather so contact Greg to see if it will go. It is your last chance to help with the trail this year. **For more info contact the leader: Greg Wenneson, trail tending coordinator at 503 460-7231 gregwenn@sonic.net.**

October 5, Saturday, Firewood Work Party

Tilly Jane, Mt. Hood, OR

See the article on page 5 for specific details. **For more info contact the leader: Andre' Fortin afortin85@gmail.com tillyjanecabin@gmail.com**

October 20, Sunday, Easy Hike

Cooper Mountain, OR

This natural area is close to town that opened in 2009. It's a great place for birds and offers nice views of the Chehalem Mountains as well as a close-up view of Oregon white oaks and a native prairie. www.thprd.org/nature/naturalareas/coopermountainnaturepark.cfm **Meet at 1 p.m. at the nature house. For more info and to RSVP (before 9 p.m. on Saturday) contact the leader: Tere Enburg 503 642-2886.** ♦

Lets hike or ski?

Pick your favorite hiking trail (and date), or if we get early snow and take some ONC friends along to enjoy the outdoors.

Lead a day tour in November or the first weekend in December! New to leading tours? Send us an email and we'll get you up to speed. Send tour descriptions (by **October 15, 8 p.m.**) to day tours at oncdayoutours@gmail.com. **Thanks.** ♦

Common meeting places: Gateway Transit Center NE 99th Ave. north of NE Pacific Ave. Parkrose/Sumner Transit Center—NE Sandy Blvd. & NE 96th Ave. McMenasins Edgefield—2126 SW Halsey Take I-84 to Exit 16 (Wood Village) turn right, go to Halsey (first stop light) turn left, go 1/2-mile; it's on the right.

Keep the trail clear and diamonds visible

Join an ONC's trail tending party and clear the brush that blocks the trails. When winter comes you can ski the trails knowing that you were a part of what makes them fun.

Info: Greg Wenneson, trail tending coordinator at 503 460-7231 gregwenn@sonic.net.

What to bring: Most trail tending parties involve light brushing, tree limbing and the hanging of blue diamonds. Bring a comfortable pair of gloves to protect your hands, long pants and good shoes, preferably hiking boots. We provide the tools but quantities are limited. If you have tools that you don't mind sharing (pruning shears, long handled loppers, bow saws), feel free to bring them. Finally, bring a lunch, snacks and lots of water, as you are sure to work up an appetite.

Summer trail tending schedule:

October 2 or 9, Wed, Trail Tending Party

Location TBD, Mt. Hood, OR or WA

Leader needed!

Oct/Nov TBD, Volunteer Recognition Party
Portland, OR

After all that hard work, you need a pie, a pizza pie!
Come get recognized for your efforts. ♦

Firewood Work Party

Come help stock the Tilly Jane A-Frame

with firewood on Saturday, October 5. The annual Firewood Work Party at Tilly Jane A-Frame is a great way to start a new season of Nordic experiences. Join other volunteers, familiar and new, by preparing this rustic backcountry ski and snowshoe destination for a long winter of skiing and guests! Firewood is the primary source of heat and indoor camaraderie for winter and spring users of this historic "ski warming shelter".

Bring work gloves, long sleeves, beverages and lunch. The firewood is mostly split, so the main chores are transporting and stacking wood.

Plan on getting there in the morning by 10 o'clock, work two or three hours, and enjoy a hardy lunch break with your own picnic package and beverages. Janet Tschanz will share some of her famous "Tilly chili."

Email us for driving directions or other info. It is located about 13 miles from the Highway 35 turnoff for Cooper Spur. Or if you want to get a hike in too hike up from the Sno-Park at Cooper Spur on the Tilly Jane Ski Trail No. 643 (about 2.5 miles, 1,900-foot elevation gain). The first building that you will encounter is the A-Frame.

Contact/info: tillyjanecabin@gmail.com, or André Fortin at afortin85@gmail.com. ♦

Submitted by Kevin McGillivray, *Nordic Issues*

OVERNIGHT TRIPS

SIGN-UP TIPS

- ◆ Our overnight trips are exclusively for members: join or renew your membership before signing up. Membership applications available on our website (mail to club P.O. Box not to the leaders).
- ◆ Contact the leader with any questions you have. Do my skills fit the skiing conditions? Any special requirements or gear? Travel time?
- ◆ Read the overnight trip policies (see sidebars)!
- ◆ Sign up early so we'll have enough people cover trip costs.
- ◆ To sign up: fill out an overnight trip application and mail it with your trip fee to the trip leader.
- ◆ If the trip is full and you still want to go? Join the waiting list: send your overnight trip application and trip fee to the leader (your fee will be returned, if you do not go). Last minute opening do occur!
- ◆ Purchase trip insurance (you are responsible for finding someone to take your place if you cancel). A link to sign-up for travel insurance will be on the overnight trip application form on the web or contact the trip leader or Overnight Trip Coordinator; they'll send you the link.

check payable to **ONC-Portland Chapter to the leader: Elke Schoen, 1533 SE Lexington St, Portland, OR 97202. For more info contact Elke 503 239-9286 elkeschoen@msn.com.**

Dec 6-7, Fri-Sat, Intermediate Backcountry Ski Tilly Jane A-Frame Cabin, Mt. Hood, OR

We'll backcountry ski to the ONC managed shelter on East side of Mt. Hood, a 3.5 mile ski with a 1,900-foot gain up the Tilly Jane Ski Trail to the cabin at 5,700 feet elevation. Participants carry their own gear, including sleeping bags, pad and food for dinner, lunch and



Andrew Black

Tilly Jane A-Frame—a great benefit for breakfasts. We have a wood stove for cooking meals

or heating water. Participants can also bring their own stove and cooking pots. Experienced intermediate skiing skills with turning ability, good physical condition and navigate skills using map, compass or GPS. Climbing skins are required.

Cost: Free (a \$15 dollar check is required to hold your space. If you cancel, the check will be cashed and donated to the TJ cabin). You must be an ONC member before signing up for this trip.

For more info, please e-mail: TillyJaneCabin@gmail.com. We'll forward your request to the appropriate trip leader.

Dec 26-31, Thur-Tues, All Ability Skate/Track Ski Methow Valley, WA —Groomed Trail Wonderland Sign-up by November 24

The Methow valley association grooms over 200 kilometers of trail through the communities of Winthrop and Mazama. Trail elevations range from 2000 to 4000 feet. The snow conditions and trail quality makes the Methow valley a skate skiers Mecca.

We'll stay in luxury condominiums in Winthrop with full accommodations. Plan for potluck dinners that we prepare in the fully equipped kitchens. Restaurants are always an option and are within skiing distance along with grocery and convenience stores.



Pam Rigor

Trudy Hussmann

Beaver Pond trail at Sun Mountain

If you have considered learning to skate ski, lessons are available at Sun Mountain and also in Mazama. Last year several participants liked their new-found skill so

much they decided to keep the rented skate skis for the entire trip. Speaking of skating, there is even an ice skating rink in town.

Trip limit: 12 participants

Cost: \$240 per person for members; you must be a current ONC member before signing up for this trip. Includes five nights lodging (\$57 to \$76 groomed trail pass cost not included).

Contact the leader to confirm space is available, then send your ONC overnight tour application and

mileage rating, to help you better select the right tour for your ability and inclination. Please consider your physical conditioning and your equipment when deciding to go on a tour. Match the tour level to your ability for your physical safety and comfort, and the safety and comfort of other participants on the tour. If you are in any doubt about the rating of a tour, please call the tour leader before the day of the tour.

Novice Ski Tour

These tours are for the inexperienced skiers. While this is not a lesson, the leader will help new skiers as much as possible. Tour length is 3-5 miles over nearly flat terrain.

Easy Tour

Ski: 4-6 miles over gentle terrain at a pace comfortable for all participants.

Bike: Mostly flat terrain, 8-10 m.p.h. pace, frequent regrouping.

Hike: < 8 miles; 200 ft. per mile elevation gain.

Backpack: < 5 miles/day; 200 ft. per mile elevation gain.

Intermediate Tour

Ski: 6-12 miles. Terrain flat to long hills that are no steeper than found on a road (maximum 10 degrees). Moderate pace. Trail turning skills required, if there are hills. Consult tour description for specifics.

Bike: Moderate terrain with rolling hill (some short steep hills); 10-14 m.p.h. pace, regrouping when appropriate.

Hike: 8-10 miles; 200 to 400 ft. per mile elev. gain.

Backpack: 5-7 miles per day; 200 to 400 ft. per mile elevation gain.

Advanced Tour
Ski: > 12 miles. Terrain flat to steep hills (> 10 degrees). Moderate to fast pace. Strong turning skills required on the tours with steeper slopes.

Bike: Difficult terrain with one or more major hills/series of longer, steeper hills; 15-18 m.p.h. pace, regrouping when necessary.

continued on sidebar page 6

Nov 27-Dec 1, Wed-Sun, All Abilities Ski and Feast Thanksgiving in Sunriver, OR—an ONC Tradition Sign-up early

Oregon Nordic Club for our traditional trip to launch the ski season: four nights at Sunriver. A turkey dinner on Thanksgiving will help celebrate the weekend. Our choices of ski options include—track, backcountry and downhill—at Mt. Bachelor and in the National Forest.

Each day we will organize ourselves according to interests, carpool to the mountain, and share potluck dinners. Non-skiing options are cycling or walking the bike paths in Sunriver, visiting the High Desert Museum or taking a



Skiing to Todd Lake—one of our favorite ski destinations on the Thanksgiving holiday

trip to the observatory, if it's open. Skiers should bring maps and ideas, as well as hiking boots, just in case, but the Nordic Center tracked trails are always open. Check this site for maps of Swampy Lakes, Dutchman Flat Area, Edison Butte and the Newberry Crater Areas: <http://www.fs.fed.us/r6/centraloregon/recreation/winter/wintermaps.shtml>

Trip limit: 8 participants (includes the leader)

Cost: \$185 per person for member; you must be a current ONC member before signing up for this trip.

Send your ONC overnight tour application and \$185

Hike: > 10 miles; 400 ft. per mile elevation gain. Steady pace and/or difficult terrain (a workout).
Backpack: > 7 miles/day; 400–600 ft./mile elevation gain.

TOUR ESSENTIALS

Pack these essentials on any ONC activity, “just in case.” Remember that cotton offers no insulation when wet. Choose wool or synthetics like polypro or Capilene® for warmth and comfort.

Skiing & Hiking Essentials

- First aid kit
- Matches (in waterproof case) and fire starter
- Rain gear and extra clothes, including a warm sweater
- Extra food and water
- Plastic whistle
- Map and compass (know how to use)
- Flashlight, extra batteries and bulb
- Space blanket or bivy bag
- Pocket knife
- Toilet paper and trowel (ziplock bag to carry out toilet paper)
- Sunglasses, lip balm and sun screen
- Foam sit pad

Biking Essentials

- Helmet (required on all bike rides)
- Spare tube
- Patch kit
- Tire pump
- Water bottle (filled)
- Tire irons

OVERNIGHT TRIP POLICIES

1. All overnight trips must be approved by the Overnight Trip Coordinator before they can be publicized. A potential leader must follow the procedures for leading a trip as determined by the Overnight Trip Coordinator. Overnight trips are announced in the newsletter or on the website.

1. All overnight trips must be approved by the Overnight Trip Coordinator before they can be

continued on page 7

\$240 check payable to ONC-Portland Chapter to the trip leader: Sam Digard, 133 SE 283rd Ave., Camas, WA 98607. For more info text or email Sam 360 910-1714 sam.digard@gmail.com (phone calls are also an option).

Dec 28–Jan 1, Sat–Wed, All Ability Ski New Year’s at Black Butte, OR Sign-up early

We’ll ring in the New Year with four days of skiing in Central Oregon’s Black Butte Resort near Sisters. Santiam Pass at 4,817 ft. is about 12 miles away with lots of ski loops and warming shelters. The Camp Sherman area, nearby, has skiing along the Metolius, to the river’s headwaters or up Black Butte. The Three Creeks area near Sisters offers more choices and a view of the pole creek area that burned a few years ago (it missed the shelter and we ski on the edge of it). Sharing great food at our potluck dinner parties in the large house will top off the day. The hot tub and swimming pool is a walk away at the Glaze Meadow recreation center. The New Years dinner and party are not to be missed! Sign up early to get your spot on this trip.

Trip limit: 10 participants (includes the leader). Cost: \$200 (estimated) per person for members; you must be a current ONC member before signing up for this trip. Includes four nights’ lodging.

Send your ONC overnight tour application and check payable to ONC-Portland Chapter to the leader: Pam Rigor, PO Box 6403, Portland, OR 97228-6403. For more info contact Pam 503 297-4284 oncnnewsletter@gmail.com.

Jan 3–4, Fri–Sat, Intermediate Backcountry Ski Tilly Jane A-Frame Cabin, Mt. Hood, OR

See Dec 6–7 trip for full description and sign up info.

Jan 10–12, Fri–Sun, All Abilities Ski Ochoco Mountains, OR Trip 1 Sign-up by December 15

This is a repeat of last year’s wonderful ski trip to the Ochoco Mountains. The Ochocos are located 30 miles east of Prineville, OR. The high elevation of 4,800 to 6,200 feet and desert location provide for excellent dry snow conditions and unsurpassed views of the Cascades. Because of the eastern location, and the high elevation, we usually experience sunny skies, or snow fall. There is rarely a rainy day. The trails are over gentle, rolling hills covered with stands of old growth Ponderosa and Lodge Pole Pines. The well-marked trail system by the ONC Chapter of the ONC offers all levels of skiing, from easy to difficult.



Skiing a trail from Ray Benson Sno-Park, Santiam Pass area

Bob Breivogel

We’ll split up into groups based on ability levels.

Accommodations are in a former well-appointed forest ranger cabin (elevation about 3,000 feet) with three bedrooms, one and a half baths. It is heated and has water, but no cell phone coverage! Participants must bring sleeping bags, pillows, and towels. We must pack out all garbage. We’ll potluck dinner for Saturday night meal. Bring your own breakfast and lunches. The drive is about three hours from Portland. We’ll ski both Saturday and Sunday.

Trip limit: 8 participants (includes the leader). Cost: \$35 per person for members; you must be a current ONC member before signing up for this trip. This fee covers two nights of lodging. Send an ONC overnight tour application and \$35 check payable to ONC-Portland Chapter to the trip leader: John Long, 3845 SW 54th Place, Portland, OR 97221-2176. For more info contact John 503 867-6048.

Jan 17–20 (MLK weekend), All Ability Ski Lake Creek Lodge, Camp Sherman, OR Sign up by December 17

Halfway between Santiam Pass and Sisters, the very popular Lake Creek Lodge boasts quaint, rustic cabins panelled in knotty pine, fireplaces, full kitchens, a creek coursing thru the grounds, and the ideal ambience for a cross-country ski holiday. Check out the website at www.lakecreeklodge.com

We’ll carpool over on Friday, have a traditional ONC potluck dinner on Saturday, and perhaps head into Sisters for Sunday dinner. Ski options are many — Santiam Pass, Mt. Bachelor area, Maxwell Sno-Park, Tam MacArthur Rim, and if we’re lucky, right out the door of our cabins.

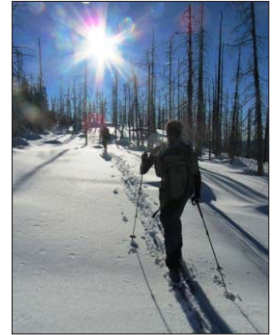
Trip limit: 16 participants. Cost: \$179 per person for members; you must be a current ONC member before signing up for this trip. This fee covers two nights of lodging.

Send an ONC overnight tour application and \$179 check to trip leader: Steve Levy, 5441 SW Nebraska St., Portland, OR 97221. For more info, contact Steve at 503-244-4262, or slevy@pacifier.com

Jan 17–20, Fri–Mon (MLK Weekend), All Ability Ski Sunriver, OR

Sign-up by December 15

Enjoy Sunriver over MLK Weekend. The snow in Central Oregon is known to be powdery, plentiful and dry. Options for skiing vary from the groomed trails of Mt. Bachelor Nordic Center to advanced backcountry tours out toward Broken Top. Sunriver also offers downhill skiing, ice-skating and shopping in the resort or nearby Bend. This is your



Skiing through the burn area



Look at the snow in the Ochocos



Coming back from Todd Lake

Mike Greenstreet

opportunity to stay at Sunriver, a wonderful resort about 17 miles south of Bend. We have a comfortable well-appointed rental house with a hot tub. We have the house for four nights.

Trip limit: 8 participants (includes the leader).

Cost: \$185 per person for members; you must be a current ONC member before signing up for this trip.

For info contact Ann 503-756-8891 or email ann.truax@gmail.com.

**Jan 24–26, Fri–Sun, All Ability Ski
Mt. Adams Lodge at the Flying L Ranch, WA
Sign-up early**

Follow the flurries to Mt. Adams and join us for two days of skiing and relaxing in the lodge with its enormous stone fireplace.

Nestled among the beautiful Ponderosa pines, Mt. Adams Lodge at the Flying L Ranch B&B is the closest overnight trip from the Portland area and a favorite of ONC. Saturday

night we'll potluck. There are plenty of ski trails—beginning to advanced—awaiting you on this sunny side of the Cascades.

Trip Limit: TBD participants.

Cost: \$TBD for members; you must be a current ONC member before signing up for this trip. Includes two nights' lodging and two gourmet breakfasts.

Send your ONC overnight tour application and check payable to ONC-Portland Chapter to the leader: Donna Matrazzo, 15500L NW Ferry Rd, Portland, OR 97231. For more info contact Donna 503 621-3049 matrazzo@msn.com.

**Jan 27–30, Mon–Thur, All Ability Ski
Summit Meadow Cabins, Trillium, Mt. Hood OR
Signup by December 20**

Here's your chance to stay on Mt. Hood and ski many of its trails without having to drive down the mountain at the end of the day. The skiing choices without driving include many of the trails in the Trillium basin and Government Camp area or

driving to Bennett Pass, Twin Lakes, or others. We will stay three nights in a house with two bedrooms and a loft, which will accommodate ten people. We will cook communally for breakfasts and dinners.

Trip Limit: 10 participants (includes leader)

Cost: \$70 per person for members; you must be a current ONC member before signing up for this trip.

Send an ONC overnight tour application along with your check for \$70 payable to ONC to the leader: Mary Hepokoski, 5425 SW Alta Mira Cir, Portland OR 97239. For more info contact Mary 503-245-1618 or hepomp8@comcast.net.



The Flying L skier gang



Trillium Lake with Hood behind

**Feb 2–6, Sun–Thur, Intermediate Backcountry
Scottish Lakes, WA
Sign up early**

Join us for a midweek trip up at Scottish Lakes High Camp located near Wenatchee, WA, just east of the Alpine Lakes Wilderness area. High Camp is the gateway



Misty clouds below untracked snow

to some of the most spectacular scenery and terrain Washington's Central Cascades has to offer. Access to High Camp is via an eight-mile private road. We will take a ride on a snowmobile: no need to part with favored treats and creature comforts this time. High Camp consists of nine rustic cabins, each with its own wood burning stove and stocked kitchen, a comfortable day lodge, hot tub and sauna. At 5,000 feet Scottish Lakes is just far enough east of the Cascade crest to offer blue skies, sunshine, and dry powdery snow. With 35 miles of well marked trails, access to the Alpine Lakes Wilderness, and plenty of thrills and spills in the High Meadows for steep seekers—there's an incredible variety of fun terrain for all levels of touring and backcountry skiing.

Info: www.scottishlakes.com and <http://www.anewoutdoors.com/TripReports/ScottishLakes06.html>.

Trip limit: 15 participants.

Cost: \$330 (estimated) per person for members; you must be a current ONC member before signing up for this trip. Not included is motel for Sunday.

Send your ONC overnight trip application and check payable to ONC-Portland Chapter to the trip leader: Russ Pascoe, 400 E 22nd Street, Vancouver, WA 98663-3205. For info contact Russ 360 901-3411 russ.bec@gmail.com.

**Feb 7–8, Fri–Sat, Intermediate Backcountry Ski
Tilly Jane A-Frame Cabin, Mt. Hood, OR**

See Dec 6–7 trip for full description and sign up info.

**Feb 7–9, Fri–Sun, All Ability Ski
Ochoco Mountains, OR Trip 2
Sign-up by January 15**

The Ochocos are located 30 miles east of Prineville, OR. The high elevation of 4,800 to 6,200 feet and desert location provide for excellent dry snow conditions and



Last year's Ochoco group

There is rarely a rainy winter day here. The trails are over gentle, rolling hills covered with stands of old growth Ponderosa and lodge Pole Pines. The well-marked trail system by the Ochoco Chapter of the ONC offers all levels of skiing, from easy to difficult. We'll split up into

unsurpassed views of the Cascades. Because of the location and the high elevation, we usually experience sunny skies, or snow fall.

publicized. A potential leader must follow the procedures for leading a trip as determined by the overnight trip coordinator. Overnight trips are announced in the newsletter or on the website.

2. Overnight trips are limited to members; non-members are invited to join using the application in the monthly newsletter or on the website.

3. All spaces are filled on a first-come, first-served basis. Participants can reserve a place on a trip by mailing or delivering the Overnight Trip Application, payment and self-addressed stamped envelope to the trip leader. Space is not reserved until receipt of required deposit or payment. The date of receipt is the earlier of the postmark date or the date of physical delivery to the trip leader.

4. Participants must provide an email address or a self-addressed, stamped envelope with payment so the leader can easily provide trip information.

5. Other ONC Chapter members are considered members and can go on Portland Chapter trips.

WAITING LIST: If a trip is full, participants can be placed on the waiting list by sending the trip leader an application and trip fee. The application and fee will be held by the leader until a space becomes available; at that time, the participant will be asked if s/he wishes to join the trip. Those not offered a place on the trip receive a full refund.

Trip Cancellation Policy
Notify the trip leader

continued on page 8

ASAP if you must cancel, even if it is a shared-cost trip and no deposit has been paid. Trip fees are nonrefundable unless a replacement is found.

The following applies:

1. If the participant desires a refund, they are responsible for finding their own replacement. Check with the trip leader to get a copy of the waiting list; this list can be used to locate a replacement. The participant should cooperate with the trip leader to draw on the waiting list for a replacement member. Once a replacement has been secured, a written or e-mail request for refund must be sent to the Overnight Trip Coordinator. Once it has been confirmed that a replacement participant has paid for the tour, a refund will be issued within 30 days, less \$10.
2. If a replacement is not secured, the participant is accountable for the full cost, and no refund will be issued.
3. If the participant has paid a deposit only, and withdraws from the trip without finding a replacement, the full amount of the deposit is forfeited and no refund will be issued.

Travel Insurance
ONC has made arrangement with TravelGuard for a special travel insurance program for trips, which covers death of a family member, major illness, or injury. It is recommended that members sign up with them at the following site, make their own arrangements for travel insurance, or take personal responsibility for lost funds.

www.travelguard.com/agentlink.asp?arc=12588&prod (this link on our website)

groups based on ability levels.

Accommodations are in a former well-appointed forest ranger cabin (elevation about 3,000 feet) with three bedrooms, one and a half baths. It is heated and has water, but no cell phone coverage! Participants must bring sleeping bags, pillows, and towels. We must pack out all garbage. We'll potluck dinner for Saturday night meal. Bring your own breakfast and lunches. The drive is about three hours from Portland. We'll ski both Saturday and Sunday.

Trip limit: 7 participants (includes the leader)
Cost: \$35 per person for members; you must be a current ONC member before signing up for this trip. This fee covers two nights of lodging.
Send an ONC overnight tour application and \$35 check payable to ONC-Portland Chapter to the trip leader: Mary Hepokoski, 5425 SW Alta Mira Circle, Portland, OR 97239. For more info contact Mary 503-245-1618 hepomp8@comcast.net

Feb 14-17, Fri-Mon (Pres' Weekend), All Ability Ski Sunriver, OR
Sign-up early

Enjoy Sunriver over MLK Weekend. The snow in Central Oregon is known to be powdery, plentiful and dry. Options for skiing vary from the groomed trails of Mt. Bachelor Nordic Center to advanced backcountry tours out toward Broken Top. Sunriver also offers downhill skiing, ice-skating and shopping in the resort or nearby Bend. This is your opportunity to stay at Sunriver, a wonderful resort about 17 miles south of Bend. We have a comfortable well-appointed rental house with a hot tub. We have the house for four nights.

Trip limit: 8 participants (includes the leader)
Cost: \$185 per person for members; you must be a current ONC member before signing up for this trip.
Send an ONC overnight tour application and \$185 check payable to ONC-Portland Chapter to the trip leader: Ted Magnuson 14405 SW High Tor Dr., Tigard, OR 97224-1425. For info contact Ted 503 590-7998 tedmag@live.com.

Feb 14-17, Fri-Mon, (Pres' Day Weekend), All Ability Ski Sunriver, OR
Family Friendly Sign-up by December 15

ONC families with kids of all ages and skill levels will enjoy a fun-filled three-day Presidents Day weekend at Sunriver. There will be plenty of hot chocolate to go around! Depending on the various skill levels and interest, we can ski at the Mt. Bachelor Nordic Center, the Virginia Meissner trails or the various Forest Service trails. Beginners can take lessons at Mt. Bachelor. When we're



Enjoying Sunriver/Bend area snow

Ron Bekey



Kids on track

Amy Blumenberg

not skiing we'll enjoy communal dinners, go sledding, build snow sculptures and relax among old and new friends. This trip will fill up fast!

Trip limit: 4 to 6 families depending on which house we rent.

Cost: \$TBD but approximately \$300 per family for members; you must be a current ONC member before signing up for this trip.

Stay tuned for more details in the November newsletter. For more info contact trip leaders Amy Blumenberg and Chris Potter 503 241-2768 ablumenberg@comcast.net

Feb 15-23, Sat-Sun, All Abilities Ski Yellowstone National Park Dream Trip, WY
Sign-up by January 15

You have been there in the summer with all the tourists. You have heard about it from others who have been there in the winter. Now it is YOUR opportunity to experience the dream: YELLOWSTONE IN WINTER! Twenty lucky people will have the opportunity of a lifetime this ski season for this Presidents' Weekend ski trip.

We'll carpool from Portland on Saturday, February 15, arriving Sunday afternoon, at Mammoth Hot Springs near the north entrance to Yellowstone National Park and staying at the historic Mammoth Hot Springs Hotel, where we'll meet for dinner. Accommodations are in rooms with double beds and shared bath. On Monday morning, a snow-coach ride takes us to Old Faithful where we move into modern western cabins with two queen beds per room and private baths. For three days of skiing among the magnificent geysers, including those in the Old Faithful basin and Lone Star Geyser, up to the Continental Divide, the Mallard Lake Trail, all while viewing elk and bison (and perhaps wolves), catching the Yellowstone that most tourists miss.

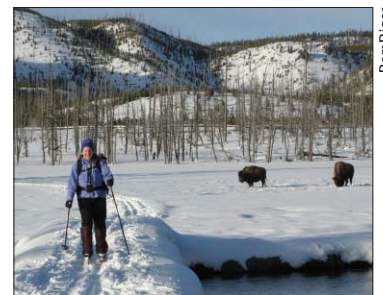
We expect dry snow and clear days. On Thursday morning, we will take special charter snow coaches to the magnificent Grand Canyon of Yellowstone for skiing and sightseeing. We then continue on to Mammoth Hot Springs for two more nights. On Friday and Saturday, we will ski in areas accessible from the Mammoth Basin Area - either Tower or Indian Creek areas. Sunday morning, we take off for home, relaxed and full of stories of our adventures and wild animal sightings. There is a wide selection of trails available, from beginning to advanced, something for every desire.

For those who wish, there is an option for beginning the trip a few days early or extending the trip for one or more days at the end. It is also possible to fly to Bozeman to



Boardwalk in the geyser basin

Bob Breivogel



Skiing with the herd, well almost!

PamRigler

avoid the drive. Please contact the tour leader for information. This trip fills up quickly so sign up early.

Trip limit: 20 participants, including the leader.

Cost: \$825 (estimated) per person for members; you must be a current ONC member before signing up for this trip. Includes six-nights lodging and breakfasts (three at Mammoth and three at Old Faithful) and snow-coach to Old Faithful, charter snow-coach to the Grand Canyon of the Yellowstone and on to Mammoth. We'll have reservations for dinners (costs not included) at the Mammoth dining room and Old Faithful Snow Lodge dining room. Costs for carpooling and lodging en-route are not included. Special rates are available for children under 12 sharing a room with parents.

Send your overnight tour application and \$500 deposit check payable to ONC-Portland Chapter to the trip leader by January 15: (contact the leader to get their address to send the application). There will be a pre-trip meeting scheduled to plan for details and carpool. For more info contact Ted 503 452-7432, by Skype at "tedscheinman," or tedskier@gmail.com.

Feb 28–Mar 1, Fri–Sun, All Abilities Ski/Snowshoe Crater Lake via Charter Bus

Signup by February 15

TRIP LEADER NEEDED

The Crater Lake rim, at 7,000 feet, averages 44 feet of snow a year. Join the ONC for the big trip at Crater Lake. We'll board the deluxe coach in Portland and proceed

down I-5 while sharing in the world famous "Rolling Pot-Luck." The next morning after a hearty gourmet breakfast at the historic Prospect Hotel we'll take a

quick ride to the rim we'll spend the day enjoying the spectacular snow formations and views of the lake and surrounding mountains while skiing as far as our legs can carry us.

Sunday will be another day of different trails, different tours, and more exploring. We can even take a ranger led interpretive snowshoe tour. Later in the afternoon, we'll board our coach and head toward home, stopping for a special dinner on the way, arriving back in Portland about 10 pm.

There are two types of accommodations: The Historic Prospect Inn which has one double/queen bed in each room for two people and the adjacent motel-like rooms, which have two or three beds per room, but everyone who



The coach takes you from Portland to the Prospect Hotel then to the rim of Crater Lake. What a great ride! Then you get to ski.



A stop for a photo on the rim of Crater Lake

wishes can have their own bed. The Historic Inn costs \$15 per person more. Please indicate which you wish.

Trip limit: 40 participants, including the leader.

Cost: \$295 per person in comfortable motel-like accommodations; \$315 in the Historic Prospect Inn (2 per bed); you must be a current ONC club member before signing up for this trip.

Send your ONC overnight trip application and \$295 or \$315 check payable to ONC-Portland Chapter. For more info contact: Ted at 503 452-7432, BY Skype at "tedscheinman," or tedskier@gmail.com.

March 6–10, Thur–Mon, All Abilities Ski

Wallowa Lake Ski Trip, Joseph, OR

Sign up by February 15

Come spend an extended weekend skiing in the magnificent Wallowa Mountains in eastern Oregon! We have two Duplex houses at Wallowa Lake, at the entrance to the Wallowas, for four nights so we can partake in three or four days of skiing. There are opportunities for all levels of skiing—backcountry skiing, road and trail skiing, and snowshoeing (provided by the resort). Some options are Salt



Trudy Hussmann

Powder snow in the Wallowas

Creek Summit,

Hurricane Trail, McCully Trail, and the West Fork Trail. We'll carpool from Portland on Thursday morning or early afternoon, arriving in Joseph in early evening. We'll ski around Wallowa Lake and in the mountains on Friday, Saturday, Sunday, and (possibly) part of Monday, returning to Portland on Monday evening. We'll have potluck dinners in the house.

Trip Limit: 8 participants.

Cost: \$125 per person for members; you must be a current ONC member before signing up for this trip.

Send your ONC overnight trip application and \$125 check payable to ONC-Portland Chapter to the trip leader: Kathy Burns, 58324 Wilson Cutoff Road, Vernonia, OR 97064. For more info contact the Kathy 503 429-4024 burnskathrynl@gmail.

March 7–8, Fri–Sat, Intermediate Backcountry Ski Tilly Jane A-Frame Cabin, Mt. Hood, OR

See Dec 6–7 trip for full description and sign up info.

Mar 22–30, Sat–Sun, All Abilities Ski Canadian Rockies Spring Break Ski Trip Possible Assiniboine Lodge Option (if there is interest contact Julius)

Sign up by Feb 1, unless filled before

This is the Big One! Don't miss out! Join us for a ski expedition to the magnificent Canadian Rockies Canmore, Banff, Kananaskis Country. We have planned six days of glorious backcountry intermediate level ski touring and groomed X-C trails of that region. The group will travel by car leaving from Portland Friday, March 21, and arriving in Canmore, Alberta Saturday, March 22 with one overnight stay on the road (not included in cost). We will start our venture by spending a day skiing at the Canmore Nordic Center, the site of the '88 Winter Olympics. Trails selected for ensuing day tours are well known in that area and

Discounts for ONC members!

Glenn's

MountainTracks

in Government Camp next to Huckleberry's Restaurant, offers ONC members group rates on cross-country ski rentals. You must show your membership card. On-line rentals. mnttracks.com

Mountain Shop

628 NE Broadway offers ONC members a 15% discount on cross-country ski rentals. On-line rentals. mountainshop.net

Oregon

Mountain Community

2975 NE Sandy offers ONC members a 10% discount on cross-country ski rentals.

Otto's Cross Country Ski & Snowshoe

38716 Pioneer Blvd. in Sandy, has cross-country ski package rental for the entire season.

Wy'East Nordic Ski School

offers ONC members a 10% discount on cross-country ski and telemark lessons. wyeastnordic.com

Ski Crater Lake NP, March 2014

Rick Grote



Ted Scheinman



Andrew Black



include Burstall Pass, Canmore to Banff via Goat Creek, Dead Mans Flat to Skogan Pass and Ribbon Creek, and Smith Dorrien trails starting from Chester Lake. These trails can be skied to whatever level of choice. One day will be left open for sightseeing or yes, more skiing! Downhill skiing is also an option. Accommodations entail a luxury house arrangements with kitchen facilities and entertainment areas for dinners and socializing. Canmore is a delightfully entertaining community and worthy of at least one night "on the town." The return trip will begin early Saturday, March 29 returning to Portland Sunday, date March 30. Travel distance to Canmore is approximately 900 miles. A pre-trip meeting will be scheduled to go over the details. A valid passport will be required to travel to Canada.



Ted Scheinman

The Canadian Rockies in the background!

Trip Limit: 8 participants.
Trip Cost: \$450 for members; you must be a current ONC member before signing up for this trip. This cost includes seven nights' accommodations in a

luxury house in Canmore. Additional costs to be incurred are one or two nights of accommodation on the road, meals, shared costs for transportation, trail fees for one day at Nordic Center and shared costs for groceries to prepare meals and trail lunches in Canmore. The total cost should be less than \$750.

We have the option of going to Assiniboine Lodge (not included in trip cost above) if there is interest. If you choose the Assiniboine option, which includes two helicopter rides, accommodations and meals at Assiniboine Lodge, the cost could be substantial. Please contact the leader if interested.

Send your ONC overnight trip application and \$450 check payable to ONC-Portland Chapter to the trip leader: **Julius Dalzell, 14311 SE Cedar Ave., Milwaukie, OR 97267. For more info contact Julius 503 705-3442 jndalzell@comcast.net.**

April 4-5, Fri-Sat, Intermediate Backcountry Ski Tilly Jane A-Frame Cabin, Mt. Hood, OR Spaces available

See Dec 6-7 trip for full description and sign up info. ♦
 Ted Scheinman, *Overnight Tours Coordinator with help from Sam Digard, Mary Hepkoski, Pam Rigor and Ann Truax*

Oregon Nordic Club Overnight Trip Application

TOUR NAME: _____ **DATE:** _____

FEE / DEPOSIT: _____ **One application per person**

Mail your check payable to ONC-Portland Chapter and this application to the tour leader at their address listed in the tour description in the newsletter. Contact them for their address if it is not available.

NAME: _____ **ONC MEMBER:** yes no* other ONC Chapter

*You must be a current ONC member before signing up for ONC overnight trips

PHONE: (home) _____ **(work)** _____ **(cell)** _____

ADDRESS: _____

CITY: _____ **STATE:** _____ **ZIP:** _____

E-MAIL:** _____

** If you do not have an e-mail address, please include a stamped, self-addressed envelope with your check and this form.

Assumption of Risk and Liability Waiver

Outdoor adventures by their very nature are inherently dangerous and involve some degree of risk. I am aware that participating in the Oregon Nordic Club's outings may expose me to certain risks and dangers including, but not limited to the hazards of mountainous, aquatic, or wilderness terrain, accident, illness, the forces of nature, and travel to and from the trailhead or point of departure. I am aware that it is not possible to foresee all of the potential hazards of outdoor activities. Each participant in a ONC activity is responsible for his or her decisions.

To the best of my knowledge, I feel physically and mentally able to assume full participation in the outings of activities in which I will participate. I understand that the Oregon Nordic Club is a volunteer organization. In consideration of voluntarily participating in these outings, trips, or activities, I have and do hereby assume all the risks inherent in these activities and hold harmless the Oregon Nordic Club and its agents, tour leaders, officers, and instructors, from and against any and all claims, liability, and demands of any nature, for the acts or omissions of the Oregon Nordic Club or its agents, tour leaders, officers, or instructors.

Please read ONC's overnight trip policies located on the side bar starting on page 6 before signing for for a trip; note the cancellation policy. Refunds are not made unless a replacement is found for your spot on the trip. Purchase trip insurance incase of hardship: www.travelguard.com/agentlink.asp?ta_arc=125858&pcod (this link is on our website)

I have read and understand the above statements concerning the Oregon Nordic Club's programs.

SIGNATURE: _____ **DATE:** _____

(Parent or Guardian must sign if the trip participant is under 18 years of age)



Welcome New Members!

No new members this month

ONC provides these names and phone numbers for the personal use of its members. Reproduction as a phone list is prohibited.

September membership report: 268 total memberships (193 single and 75 family). Last year at this time there were 246 memberships.

BOARD MEETING MINUTES

September 9, 2013 draft of minutes

Members Present: Kim Davis, Andre Fortin, Mary Hepokoski, and Bill Yaeger

Approval of minutes

Treasurer's Report: Mary presented a revised trip report showing an overall 2.9% profit on all 2012-2013 trips. Also included was a table of net income for the club for the past 3 years, showing roughly \$18000 over that period. This amount was approximately equal to the net Tilly Jane income for those years.

The club has about 140 iron-on emblems which cost \$3 each. 50 have been affixed to caps for volunteer recognition awards.

Reports

State Board: Mary reported news from the state ONC meeting. A new chapter in Halfway has been formed. Meissner chapter is withdrawing from the club. She confirmed that occasional non-member guests to Tilly Jane work parties are covered by the club's insurance.

Day Tours: Mary will co-ordinate December day trips

Overnight tours: Leaders are needed on 5 trips: Black Butte (Bill Yaeger is considering leading), Breitenbush, Crater Lake, Wallowas and Canadian Rockies.

"Family Friendly" overnight tours were discussed. These tours have consistently lost money in the past. There are currently none scheduled for 2013-2014, but if one is proposed, the board will discuss whether to continue offering these tours.

The board briefly discussed the issue of leader responsibility for trip profits, generally agreeing not to penalize leaders over trip economic results.

Nordic Issues: The board discussed the end of sno-park permit reciprocity between Washington and Oregon. When trip leaders who lead 2 trips are reimbursed for their sno-park permits, they may ask for either state's fee.

The board voted to purchase 30 Oregon sno-park permits and sell them at cost (\$25) at the November meeting.

Publicity: Kim has contacted Janet Schmidt, the REI program co-ordinator. REI would welcome a presentation about tours, trips and Tilly Jane, date TBA. Flyers are needed with this information. Ted suggested offering club membership to purchasers of skis at REI, but the board doesn't want to jeopardize the club's relationship with the Mountain Shop and so will not do this.

Leadership training: The need for an updated trip list to assist prospective leaders was discussed. An announcement will be made at the October general meeting for volunteers to work on this.

Subsidization of first-aid training and orienteering classes was discussed. Mazama classes may be the best option.

Volunteer recognition: the need for a volunteer list was discussed, both for invitations to this meeting and for awards. Hats and/or emblems will be awarded.

Next meeting: October 7, 7:00 pm, Mazamas Mountaineering Center, 527 SE 43rd, PDX

Submitted by Bill Yaeger

Submitted By: Steve Planchon, *Secretary*

CLASSIFIED ADS

FOR SALE: ► Fischer RCS Classic Crown Skis, 195 cm, Rottefella NNN bindings, great condition Rossignol XCium LVF boots, sz 40 (unisex/low volume fit), \$90 (skis & bindings only). \$90 (boots only). \$150 (skis & boots \$30 discount on the set).

► Women's Karhu Convert II 75 mm cross-country ski boots, sz 8.5, Comfortable, lots of great features. Like new condition in original box. \$80 (\$160 new). Amy 503 891-3689 ablumenberg@comcast.net

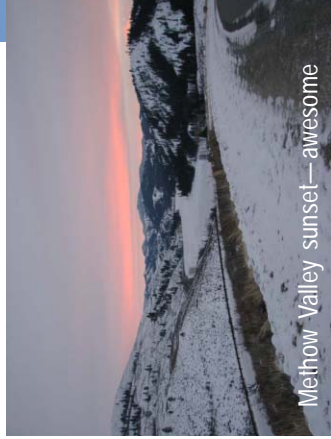
FOR SALE: ► Fischer RCS Classic Crown Skis, "nearly new" (used twice), 207 cm, Performance-Level groomed track ski (great for Teacup, Trillium, Meisner Trails in Bend, etc.) \$150. Chris 503 241-2768 imayooper@hotmail.com

FOR SALE: ► Brand-new Rossignol BCX5 touring boots. Egads! My loss could be your gain . . . Women's size 41. Black with copper brown accents. Very attractive and comfortable boot. I merely ordered the wrong size once more. Bought new from Sierra Trading Post for \$65. Will take \$50 OBO. Ted 503 452-7432

Deadline: 15th of the month (for next month's publication). Free ads are for members only, placed on a first come basis and may be edited depending on space availability. Send to: oncnewsletter@gmail.com as a MS Word document attachment -- preferred--(with no formatting i.e. no bold text or tabs), in Times Roman, compatible text file, or send text in an email. Ads will be published for 3 months. Please notify editor to run ads longer or be remove earlier.

Overnight Tours' Extravaganza Preview/sign-up: ONC overnight trips

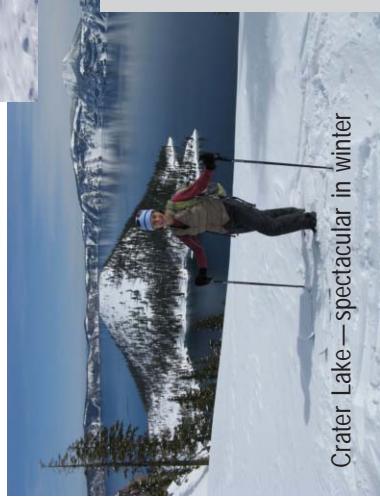
Join us for a photo journey to Yellowstone National Park, Crater Lake National Park, Methow Valley, Canada, Mt. Adams Lodge at the Flying L Ranch and more! Talk to the trip leaders. Meet new friends at the potluck and social hour.



Methow Valley sunset—awesome

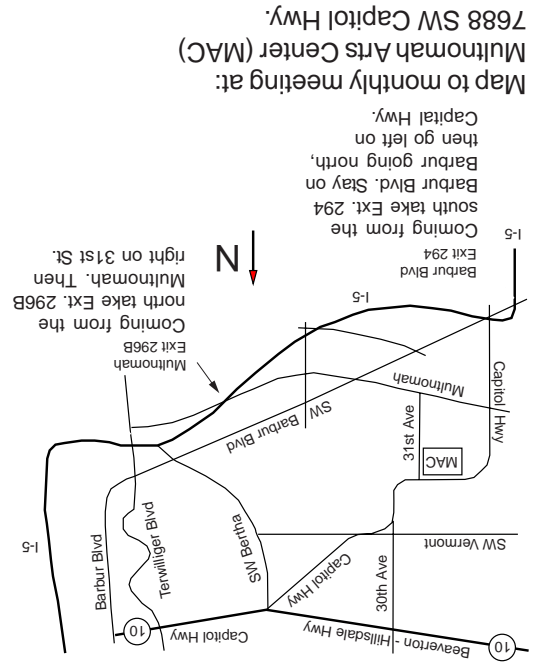


Yellowstone—a dream in winter



Crater Lake—spectacular in winter

Oregon Nordic Club, Inc., Portland Chapter
P.O. Box 3906
Portland, OR 97208-3906



Multnomah Arts Center
7688 SW Capitol Hwy.
Tuesday, October 1
6:30 p.m. potluck
7:30 p.m. meeting /program
Guests are welcome to join club members for the potluck. Bring a food dish to share, along with your own plate, utensils and beverage.

Upcoming programs
November 5—Patagonia
December 3—Ski Fair and Used Equipment Sale



Oregon Nordic Club
P O R T L A N D
C H A P T E R